

- LEGEND**
- RAILWAY STATIONS
 - DEVELOPMENT BOUNDARY
 - 100M BUFFER
- HYDROSTRATIGRAPHIC ROCK UNITS (GSI)**
- BASALTS & OTHER VOLCANIC ROCKS
 - NAMURIAN UNDIFFERENTIATED DINANTIAN MIXED SANDSTONES, SHALES AND LIMESTONES
 - DINANTIAN SANDSTONES
 - DINANTIAN PURE BEDDED LIMESTONES
 - DINANTIAN UPPER IMPURE LIMESTONES
 - DINANTIAN PURE UNBEDDED LIMESTONES
 - DINANTIAN LOWER IMPURE LIMESTONES
 - DINANTIAN (EARLY) SANDSTONES, SHALES AND LIMESTONES
 - DEVONIAN OLD RED SANDSTONES
 - GRANITES & OTHER IGNEOUS INTRUSIVE ROCKS
 - SILURIAN METASEDIMENTS AND VOLCANICS
 - ORDOVICIAN METASEDIMENTS
 - ORDOVICIAN VOLCANICS
 - CAMBRIAN METASEDIMENTS

Disclaimer
 © Irish Rail (2023). This drawing is confidential and the copyright in it is owned by Irish Rail. This drawing must not be either loaned, copied or otherwise reproduced in whole or in part or used for any purpose without the prior permission of Irish Rail.

© OpenStreetMap contributors.

© Contains Irish Public Sector Data (Geological Survey Ireland) licensed under a Creative Commons Attribution 4.0 International (CC BY 4.0) licence.

© Ordnance Survey Ireland and Government of Ireland. All O.S. data used for plans are printed under "Copyright Ordnance Survey Ireland 0039723 (OSI Aerial Data or OSI Lidar Data) & 2023/ OSI, NMA, 180 (OSI Vector Data)". All elevations are in metres and relate to OSI Geoid Model (OSGM02) Malin Head as defined by existing Project Control. All Co-ordinates are in Irish Transverse Mercator Grid (ITM) as defined by OSI active GPS station Tallaght College (TLLG).

NOTES

Rev	Date	Dn	Ch'd	App'd	Description
P02	31/05/2024	DM	MF	GS	PLANNING ISSUE

Client:

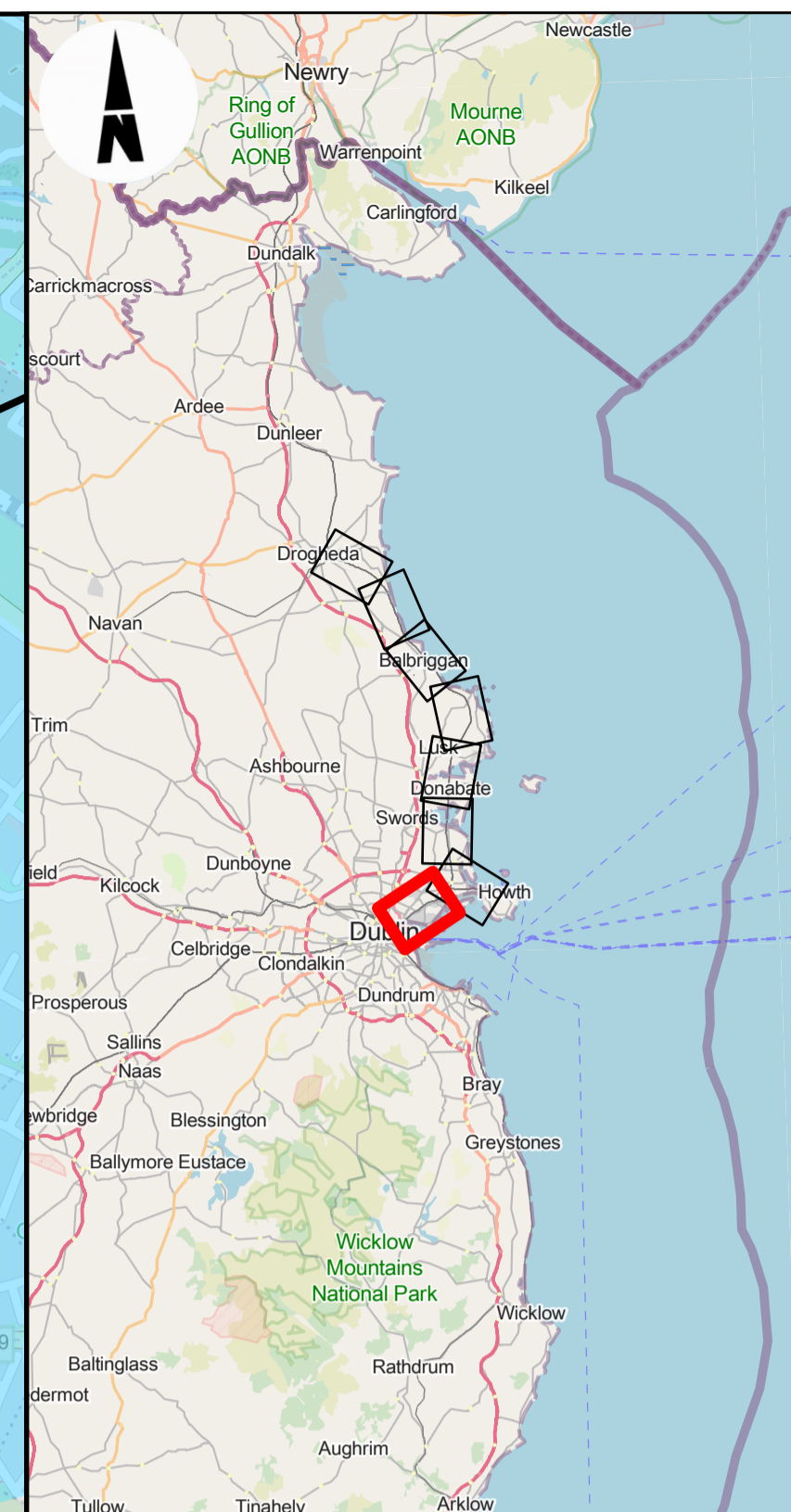
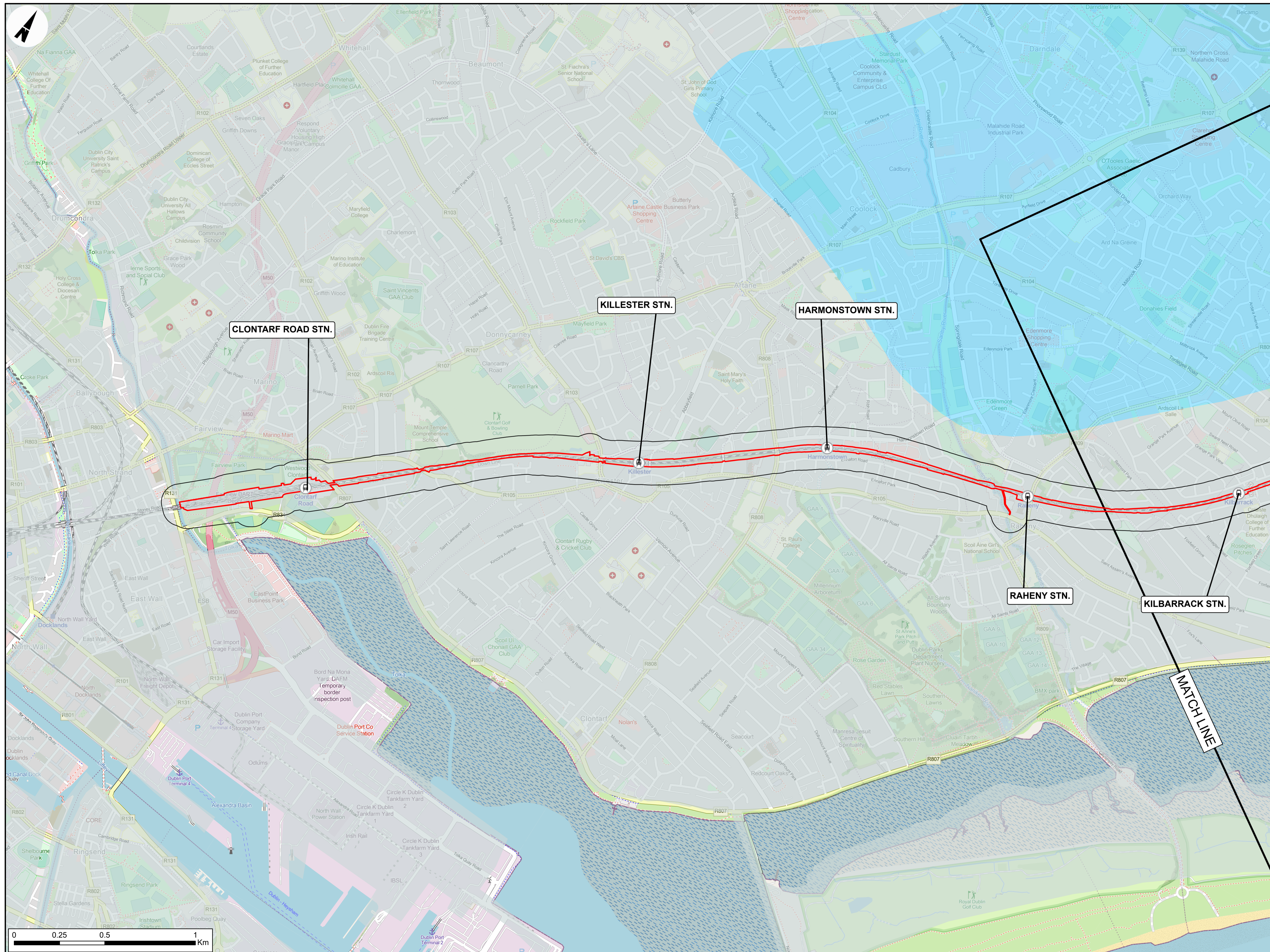
Engineering Designer:

Date: 07/09/2023 Scale: 1:75000 @ A1 1:150000 @ A3

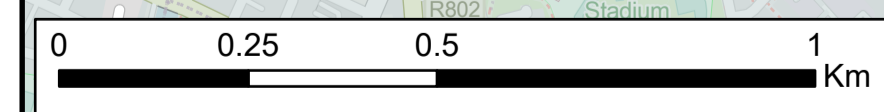
Project Code: D+WP56 Originator Code: ARP OMS Code: 279933-00

Drawn: DM Checked: MF Approved: GS

Project Title: DART+ COASTAL NORTH			
Drawing Title: HYDROGEOLOGY FIGURE 11.2: HYDROSTRATIGRAPHIC ROCK UNITS OVERVIEW			
Drawing File Name: D+WP56-ARP-ZZ-NL-DR-EVGT-100071	Sheet Number: 1 of 9	Status: S4	Rev: P02



- LEGEND**
- RAILWAY STATIONS
 - DEVELOPMENT BOUNDARY
 - 100M BUFFER
 - HYDROSTRATIGRAPHIC ROCK UNITS (GSI)**
 - DINANTIAN UPPER IMPURE LIMESTONES
 - DINANTIAN LOWER IMPURE LIMESTONES



NOTES

Disclaimer
 © Irish Rail (2023). This drawing is confidential and the copyright in it is owned by Irish Rail. This drawing must not be either loaned, copied or otherwise reproduced in whole or in part or used for any purpose without the prior permission of Irish Rail.

© OpenStreetMap contributors.

© Contains Irish Public Sector Data (Geological Survey Ireland) licensed under a Creative Commons Attribution 4.0 International (CC BY 4.0) licence.

© Ordnance Survey Ireland and Government of Ireland. All O.S. data used for plans are printed under "Copyright Ordnance Survey Ireland 0039723 (OSI Aerial Data or OSI Lidar Data) & 2023/ OSI, NMA, 180 (OSI Vector Data)". All elevations are in metres and relate to OSI Geoid Model (OSGM02) Malin Head as defined by existing Project Control. All Co-ordinates are in Irish Transverse Mercator Grid (ITM) as defined by OSI active GPS station Tallaght College (TLG).

Rev	Date	Dn	Ch'd	App'd	Description
P02	31/05/2024	DM	MF	GS	PLANNING ISSUE

Client: **Irish Rail**

Engineering Designer: **ARUP**

Date: 07/09/2023 | Scale: 1:10000 @ A1 | 1:20000 @ A3

Project Code: D+WP56 | Originator Code: ARP

Drawn: DM | Checked: MF | Approved: GS

OMS Code: 279933-00

Project Title: **DART+ COASTAL NORTH**

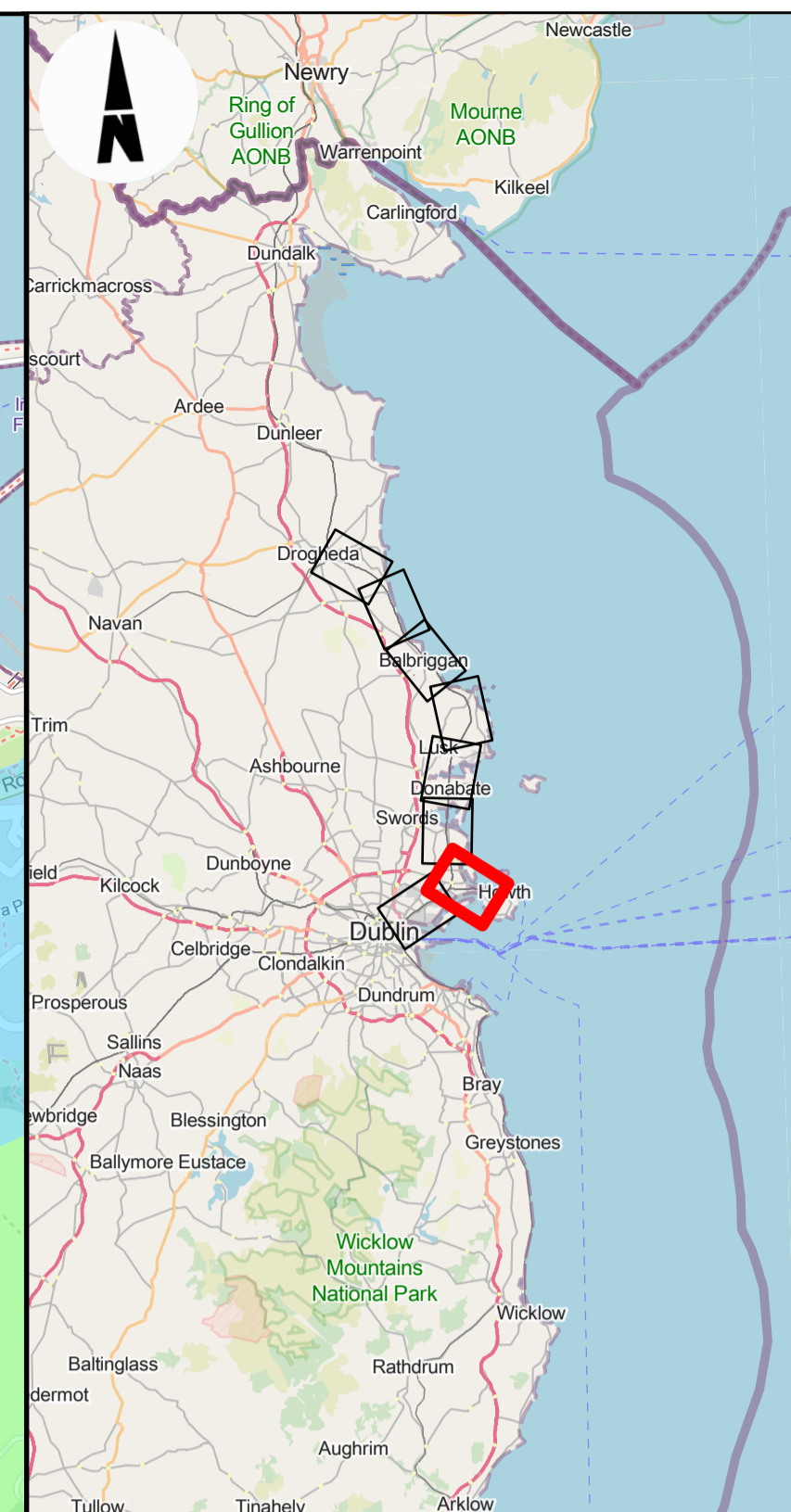
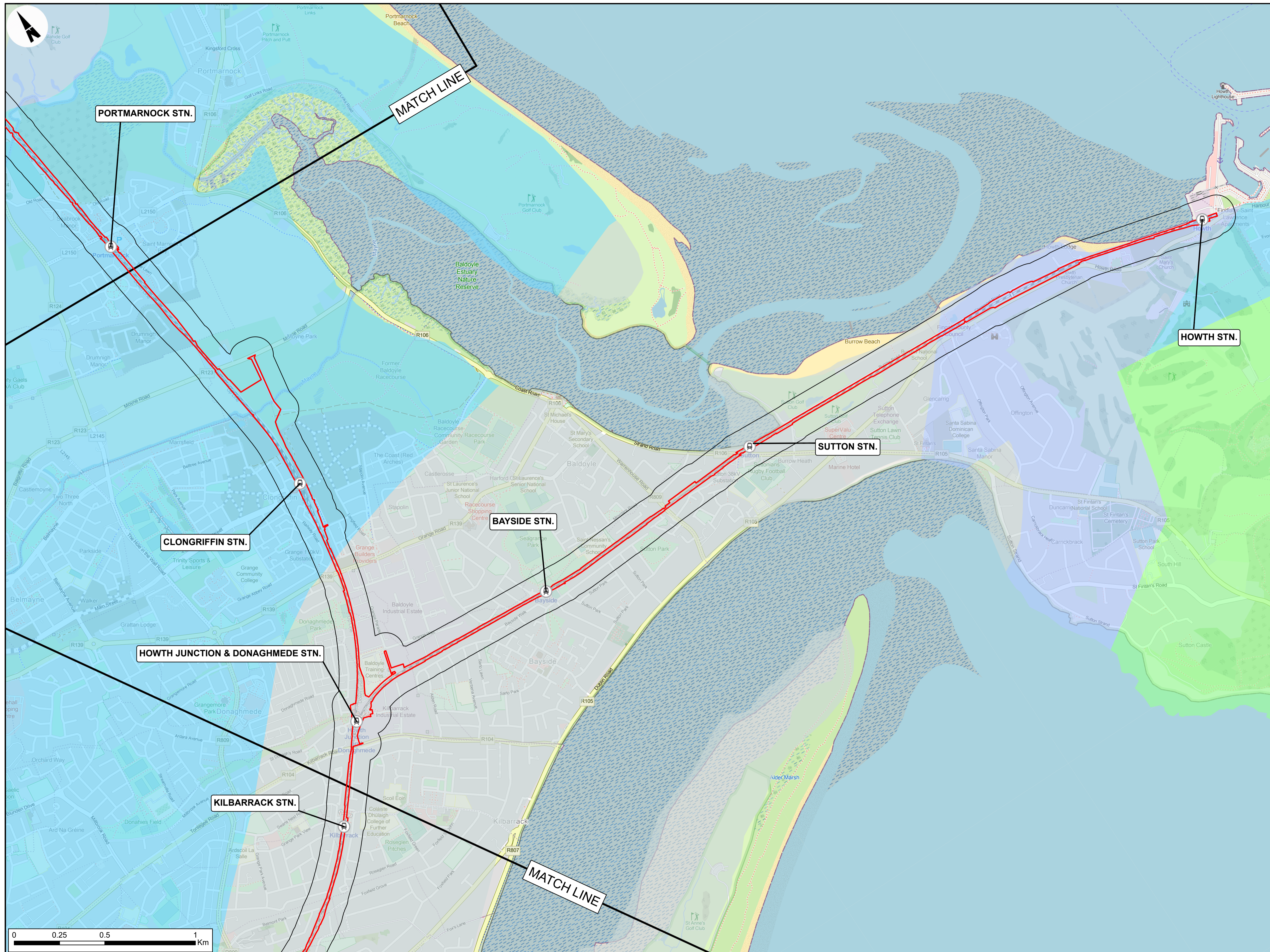
Drawing Title: **HYDROGEOLOGY
FIGURE 11.2: HYDROSTRATIGRAPHIC ROCK UNITS**

Drawing File Name: D+WP56-ARP-ZZ-NL-DR-EVGT-100072

Sheet Number: 2 of 9

Status: S4

Rev: P02



- LEGEND**
- RAILWAY STATIONS
 - DEVELOPMENT BOUNDARY
 - 100M BUFFER
- HYDROSTRATIGRAPHIC ROCK UNITS (GSI)**
- DINANTIAN UPPER IMPURE LIMESTONES
 - DINANTIAN PURE UNBEDDED LIMESTONES
 - DINANTIAN LOWER IMPURE LIMESTONES
 - CAMBRIAN METASEDIMENTS

Disclaimer
 © Irish Rail (2023). This drawing is confidential and the copyright in it is owned by Irish Rail. This drawing must not be either loaned, copied or otherwise reproduced in whole or in part or used for any purpose without the prior permission of Irish Rail.

© OpenStreetMap contributors.

© Contains Irish Public Sector Data (Geological Survey Ireland) licensed under a Creative Commons Attribution 4.0 International (CC BY 4.0) licence.

© Ordnance Survey Ireland and Government of Ireland. All O.S. data used for plans are printed under "Copyright Ordnance Survey Ireland 0039723 (OSI Aerial Data or OSI Lidar Data) & 2023/ OSI_NMA_180 (OSI Vector Data)". All elevations are in metres and relate to OSI Geoid Model (OSGM02) Malin Head as defined by existing Project Control. All Co-ordinates are in Irish Transverse Mercator Grid (ITM) as defined by OSI active GPS station Tallaght College (TLLG).

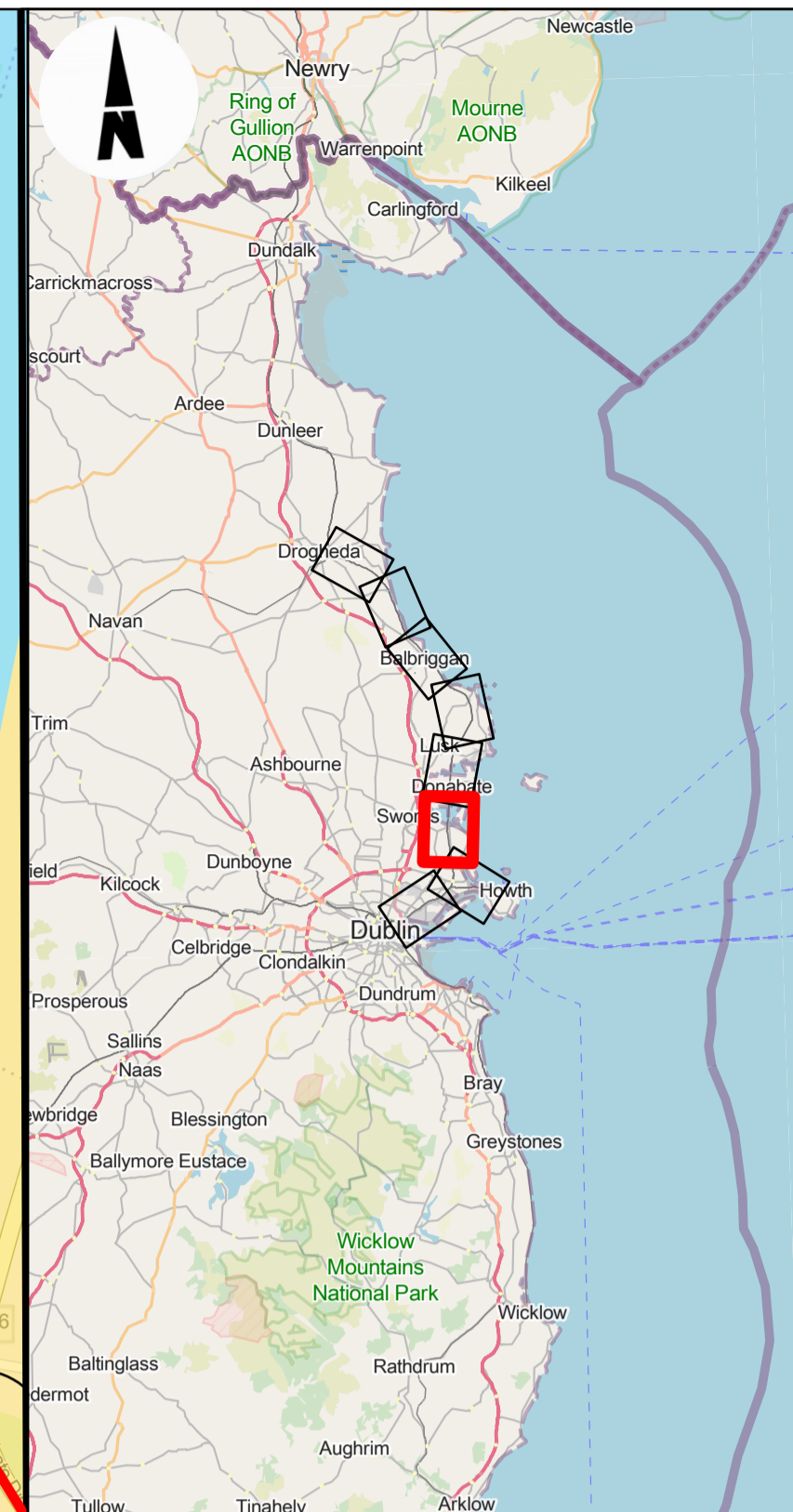
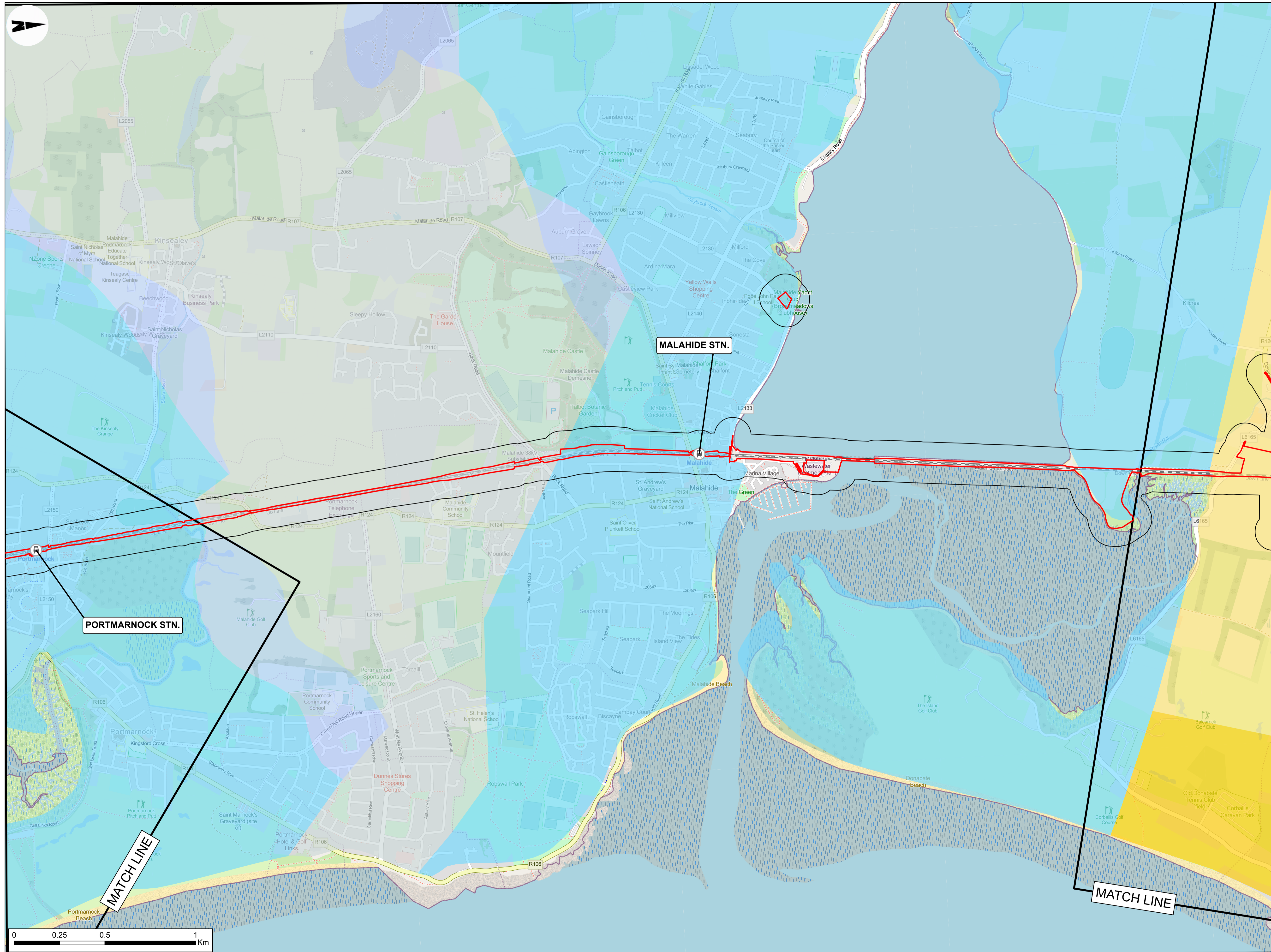
NOTES



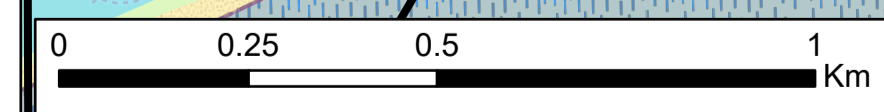
Rev	Date	Dn	Ch'd	App'd	Description
P02	31/05/2024	DM	MF	GS	PLANNING ISSUE

Client Irish Rail		Engineering Designer ARUP		
Date 07/09/2023	Scale 1:10000 @ A1 1:20000 @ A3	Drawn DM	Checked MF	Approved GS
Project Code D+WP56	Originator Code ARP	QMS Code 279933-00		

Project Title DART+ COASTAL NORTH				
Drawing Title HYDROGEOLOGY FIGURE 11.2: HYDROSTRATIGRAPHIC ROCK UNITS				
Drawing File Name D+WP56-ARP-ZZ-NL-DR-EVGT-100073	Sheet Number 3 of 9	Status S4	Rev P02	



- LEGEND**
- RAILWAY STATIONS
 - DEVELOPMENT BOUNDARY
 - 100M BUFFER
- HYDROSTRATIGRAPHIC ROCK UNITS (GSI)**
- DINANTIAN SANDSTONES
 - DINANTIAN UPPER IMPURE LIMESTONES
 - DINANTIAN PURE UNBEDDED LIMESTONES
 - DINANTIAN LOWER IMPURE LIMESTONES
 - ORDOVICIAN VOLCANICS



NOTES

Disclaimer
© Irish Rail (2023). This drawing is confidential and the copyright in it is owned by Irish Rail. This drawing must not be either loaned, copied or otherwise reproduced in whole or in part or used for any purpose without the prior permission of Irish Rail.

© OpenStreetMap contributors.

© Contains Irish Public Sector Data (Geological Survey Ireland) licensed under a Creative Commons Attribution 4.0 International (CC BY 4.0) licence.

© Ordnance Survey Ireland and Government of Ireland. All O.S. data used for plans are printed under "Copyright Ordnance Survey Ireland 0039723 (OSI Aerial Data or OSI Lidar Data) & 2023/ OSI, NMA, 180 (OSI Vector Data)". All elevations are in metres and relate to OSI Geoid Model (OSGM02) Malin Head as defined by existing Project Control. All co-ordinates are in Irish Transverse Mercator Grid (ITM) as defined by OSI active GPS station Tallaght College (TLG).

Rev	Date	Dn	Chkd	App'd	Description
P02	31/05/2024	DM	MF	GS	PLANNING ISSUE

Client: **larnród Éireann Irish Rail**

Engineering Designer: **ARUP**

Date: 07/09/2023 | Scale: 1:10000 @ A1 1:20000 @ A3

Project Code: D+WP56 | Originator Code: ARP

QMS Code: 279933-00

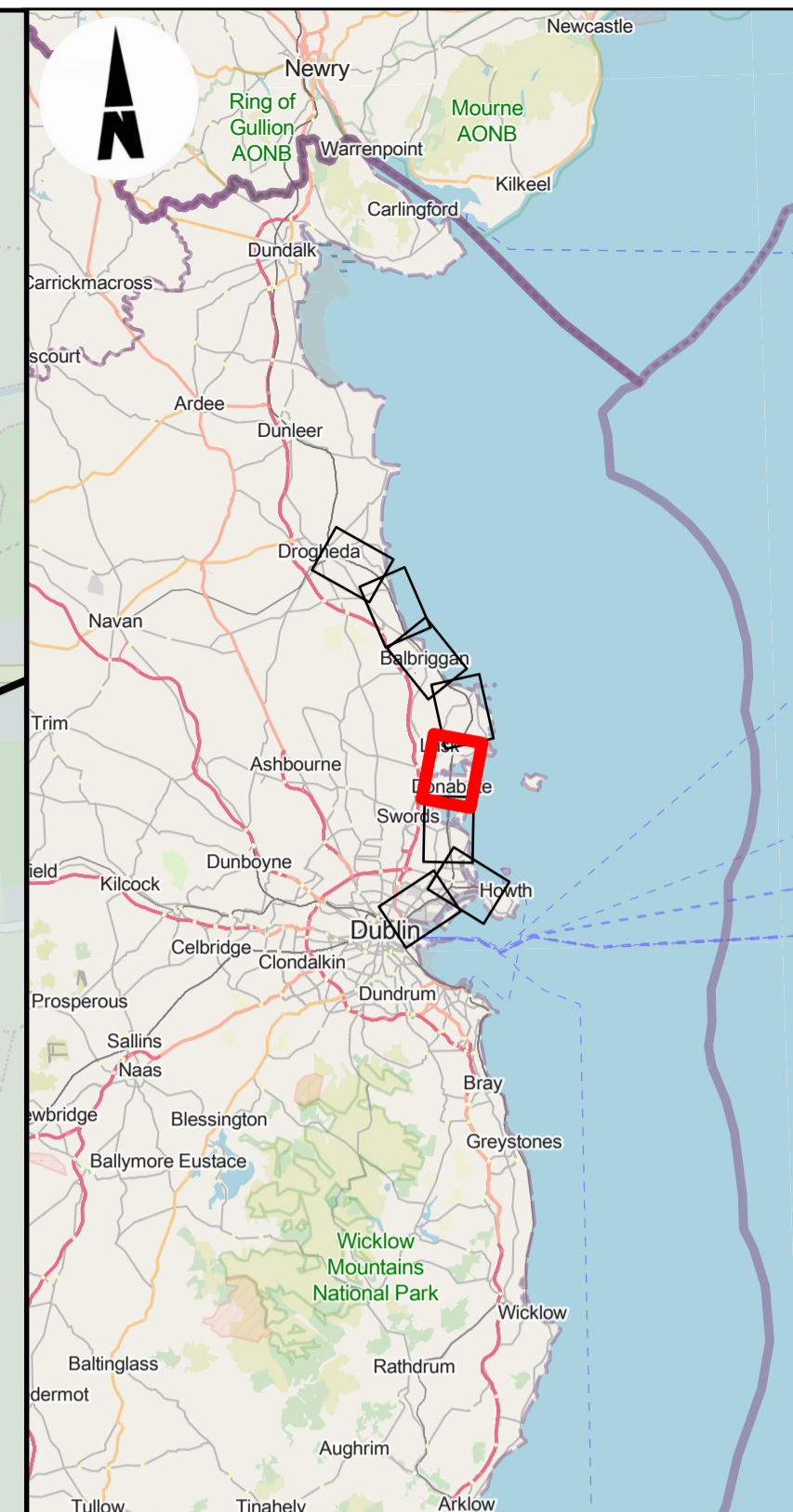
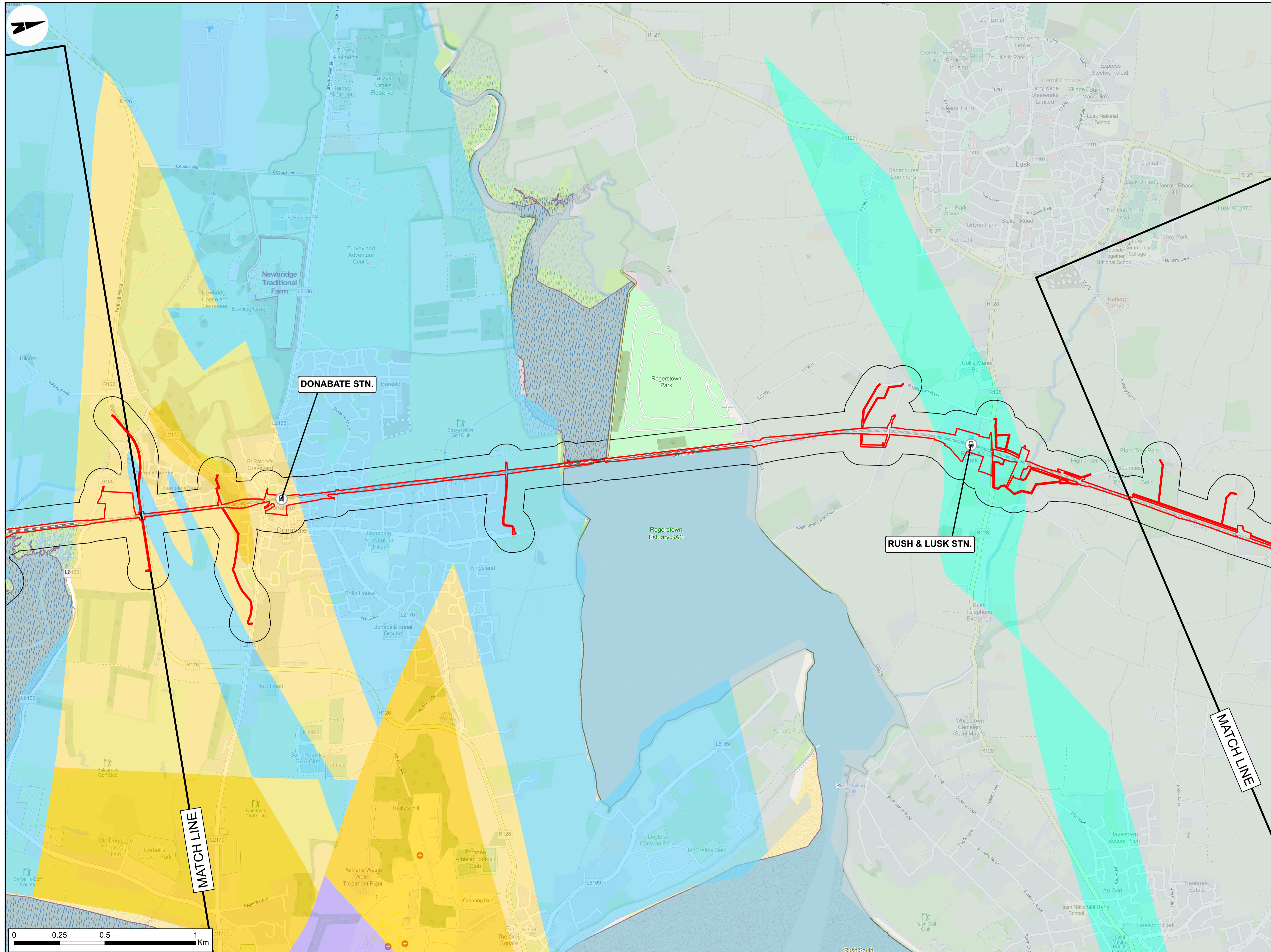
Drawn: DM | Checked: MF | Approved: GS

Project Title: **DART+ COASTAL NORTH**

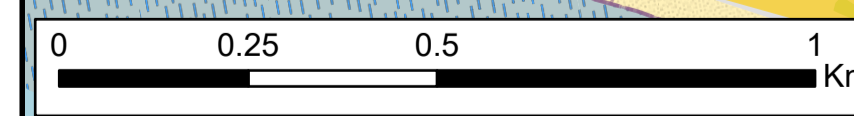
Drawing Title: **HYDROGEOLOGY
FIGURE 11.2: HYDROSTRATIGRAPHIC ROCK UNITS**

Drawing File Name: D+WP56-ARP-ZZ-NL-DR-EVGT-100074

Sheet Number: 4 of 9 | Status: S4 | Rev: P02



- LEGEND**
- RAILWAY STATIONS
 - DEVELOPMENT BOUNDARY
 - 100M BUFFER
- HYDROSTRATIGRAPHIC ROCK UNITS (GSI)**
- DINANTIAN MIXED SANDSTONES, SHALES AND LIMESTONES
 - DINANTIAN SANDSTONES
 - DINANTIAN UPPER IMPURE LIMESTONES
 - DINANTIAN LOWER IMPURE LIMESTONES
 - ORDOVICIAN METASEDIMENTS
 - ORDOVICIAN VOLCANICS



NOTES

Disclaimer
 © Irish Rail (2023). This drawing is confidential and the copyright in it is owned by Irish Rail. This drawing must not be either loaned, copied or otherwise reproduced in whole or in part or used for any purpose without the prior permission of Irish Rail.

© OpenStreetMap contributors.

© Contains Irish Public Sector Data (Geological Survey Ireland) licensed under a Creative Commons Attribution 4.0 International (CC BY 4.0) licence.

© Ordnance Survey Ireland and Government of Ireland. All O.S. data used for plans are printed under "Copyright Ordnance Survey Ireland 0039723 (OSI Aerial Data or OSI Lidar Data) & 2023/ OSI, NMA, 180 (OSI Vector Data)". All elevations are in metres and relate to OSI Geoid Model (OSGM02) Malin Head as defined by existing Project Control. All Co-ordinates are in Irish Transverse Mercator Grid (ITM) as defined by OSI active GPS station Tallaght College (TLLG).

Rev	Date	Dn	Ch'd	App'd	Description
P02	31/05/2024	DM	MF	GS	PLANNING ISSUE

DART+ Coastal North

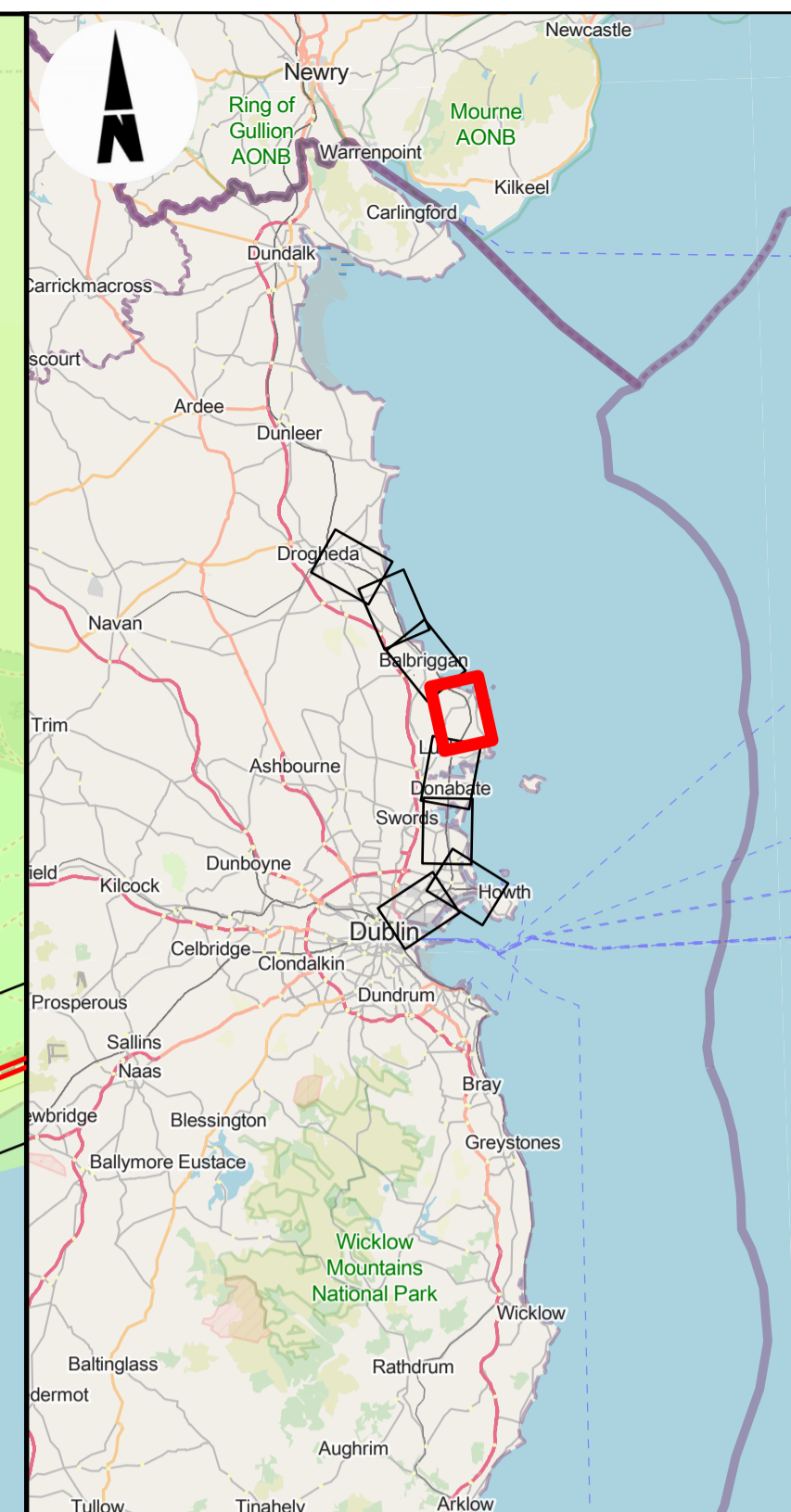
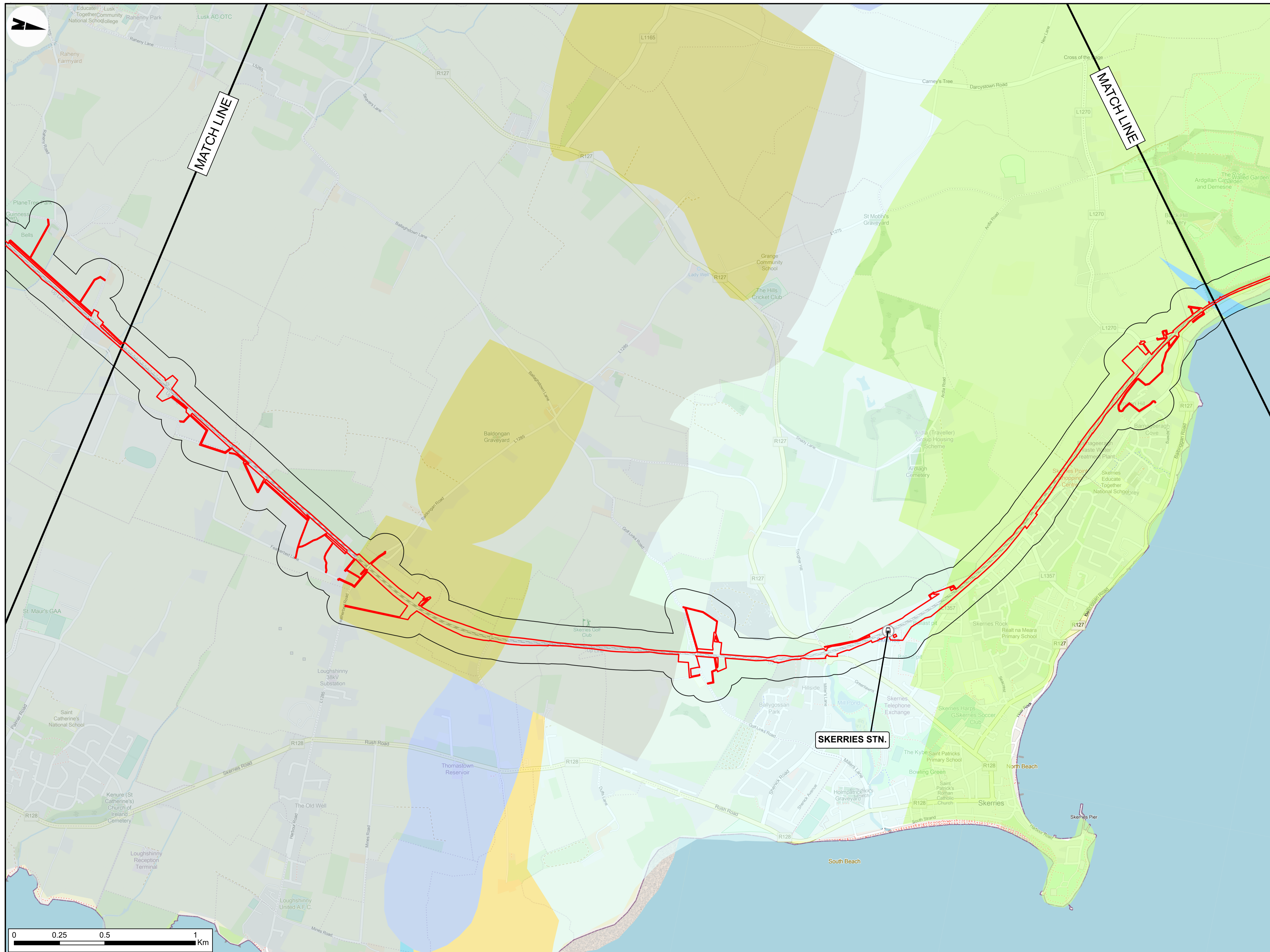
NTA
 Údarás Náisiúnta Iompartha
 National Transport Authority

Tionscadal Éireann Project Ireland 2040

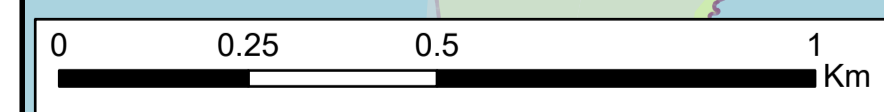
Client		Engineering Designer		Project Title	
Iarnród Éireann Irish Rail		ARUP		DART+ COASTAL NORTH	
Date	Scale	Drawn	Checked	Approved	
07/09/2023	1:10000 @ A1 1:20000 @ A3	DM	MF	GS	
Project Code	Originator Code	OMS Code		Drawing File Name	Sheet Number
D+WP56	ARP	279933-00		D+WP56-ARP-ZZ-NL-DR-EVGT-100075	5 of 9

Rev	Date	Dn	Ch'd	App'd	Description
P02	31/05/2024	DM	MF	GS	PLANNING ISSUE

Date	Scale	Drawn	Checked	Approved	
07/09/2023	1:10000 @ A1 1:20000 @ A3	DM	MF	GS	
Project Code	Originator Code	OMS Code		Drawing File Name	Sheet Number
D+WP56	ARP	279933-00		D+WP56-ARP-ZZ-NL-DR-EVGT-100075	5 of 9



- LEGEND**
- RAILWAY STATIONS
 - DEVELOPMENT BOUNDARY
 - 100M BUFFER
- HYDROSTRATIGRAPHIC ROCK UNITS (GSI)**
- NAMURIAN UNDIFFERENTIATED
 - DINANTIAN SANDSTONES
 - DINANTIAN PURE BEDDED LIMESTONES
 - DINANTIAN UPPER IMPURE LIMESTONES
 - DINANTIAN PURE UNBEDDED LIMESTONES
 - DINANTIAN LOWER IMPURE LIMESTONES
 - SILURIAN METASEDIMENTS AND VOLCANICS



NOTES

Disclaimer
© Irish Rail (2023). This drawing is confidential and the copyright in it is owned by Irish Rail. This drawing must not be either loaned, copied or otherwise reproduced in whole or in part or used for any purpose without the prior permission of Irish Rail.

© OpenStreetMap contributors.

© Contains Irish Public Sector Data (Geological Survey Ireland) licensed under a Creative Commons Attribution 4.0 International (CC BY 4.0) licence.

© Ordnance Survey Ireland and Government of Ireland. All O.S. data used for plans are printed under "Copyright Ordnance Survey Ireland 0039723 (OSI Aerial Data or OSI Lidar Data) & 2023/ OSI, NMA, 180 (OSI Vector Data)". All elevations are in metres and relate to OSI Geoid Model (OSGM02) Malin Head as defined by existing Project Control. All Co-ordinates are in Irish Transverse Mercator Ghd (ITM) as defined by OSI active GPS station Tallaght College (TLLG).

Tionscadal Éireann
Project Ireland
2040

Rev	Date	Dn	Ch'd	App'd	Description
P02	31/05/2024	DM	MF	GS	PLANNING ISSUE

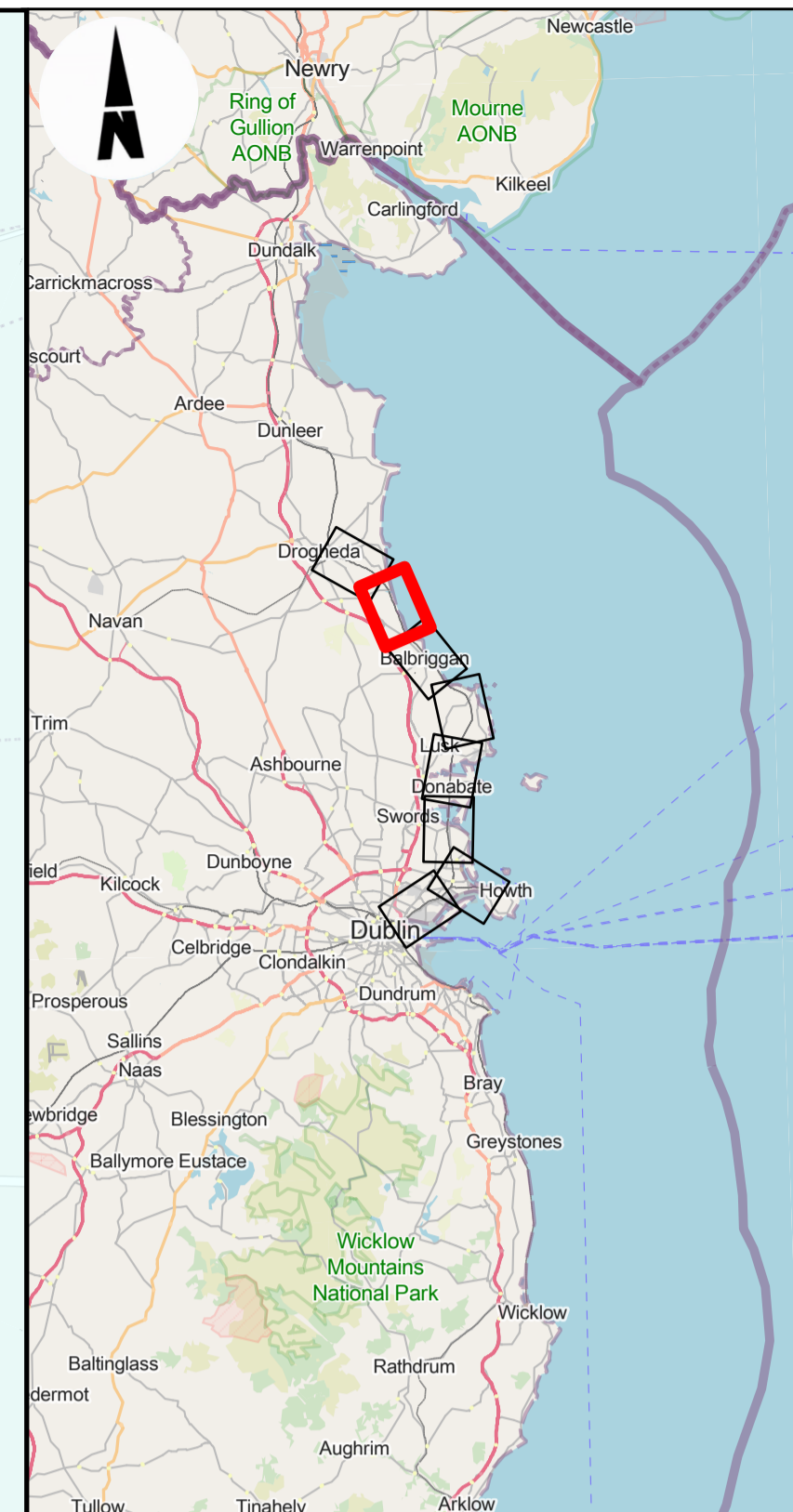
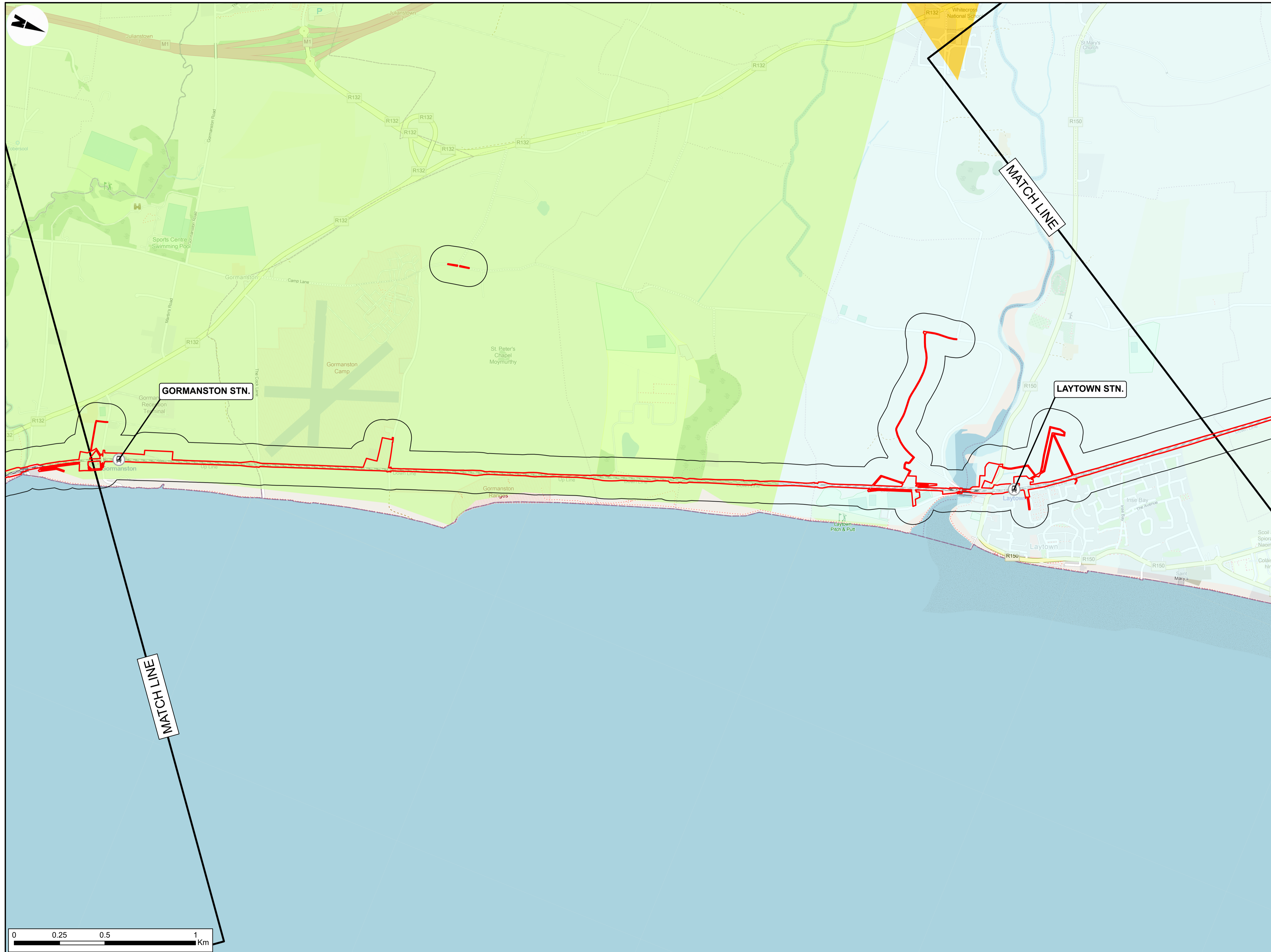
Date: 07/09/2023 Scale: 1:10000 @ A1 1:20000 @ A3

Project Code	Originator Code	OMS Code	Drawn	Checked	Approved
D+WP56	ARP	279933-00	DM	MF	GS

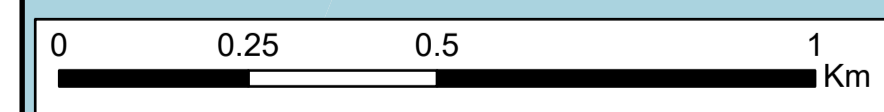
Client: **DART+ COASTAL NORTH**

Drawing Title: **HYDROGEOLOGY
FIGURE 11.2: HYDROSTRATIGRAPHIC ROCK UNITS**

Drawing File Name	Sheet Number	Status	Rev
D+WP56-ARP-ZZ-NL-DR-EVGT-100076	6 of 9	S4	P02



- LEGEND**
- RAILWAY STATIONS
 - DEVELOPMENT BOUNDARY
 - 100M BUFFER
- HYDROSTRATIGRAPHIC ROCK UNITS (GSI)**
- DINANTIAN PURE BEDDED LIMESTONES
 - SILURIAN METASEDIMENTS AND VOLCANICS
 - ORDOVICIAN VOLCANICS



Disclaimer
 © Irish Rail (2023). This drawing is confidential and the copyright in it is owned by Irish Rail. This drawing must not be either loaned, copied or otherwise reproduced in whole or in part or used for any purpose without the prior permission of Irish Rail.

© OpenStreetMap contributors.

© Contains Irish Public Sector Data (Geological Survey Ireland) licensed under a Creative Commons Attribution 4.0 International (CC BY 4.0) licence.

© Ordnance Survey Ireland and Government of Ireland. All O.S. data used for plans are printed under "Copyright Ordnance Survey Ireland 0039723 (OSI Aerial Data or OSI Lidar Data) & 2023/ OSI, NIMA, 180 (OSI Vector Data)". All elevations are in metres and relate to OSI Geoid Model (OSGM02) Malin Head as defined by existing Project Control. All Co-ordinates are in Irish Transverse Mercator Grid (ITM) as defined by OSI active GPS station Tallaght College (TLLG).

NOTES



Rev	Date	Dn	Ch'd	App'd	Description
P02	31/05/2024	DM	MF	GS	PLANNING ISSUE

Client: **Irish Rail**

Engineering Designer: **ARUP**

Date: 07/09/2023 Scale: 1:10000 @ A1, 1:20000 @ A3

Project Code: D+WP56 Originator Code: ARP

Drawn: DM Checked: MF Approved: GS

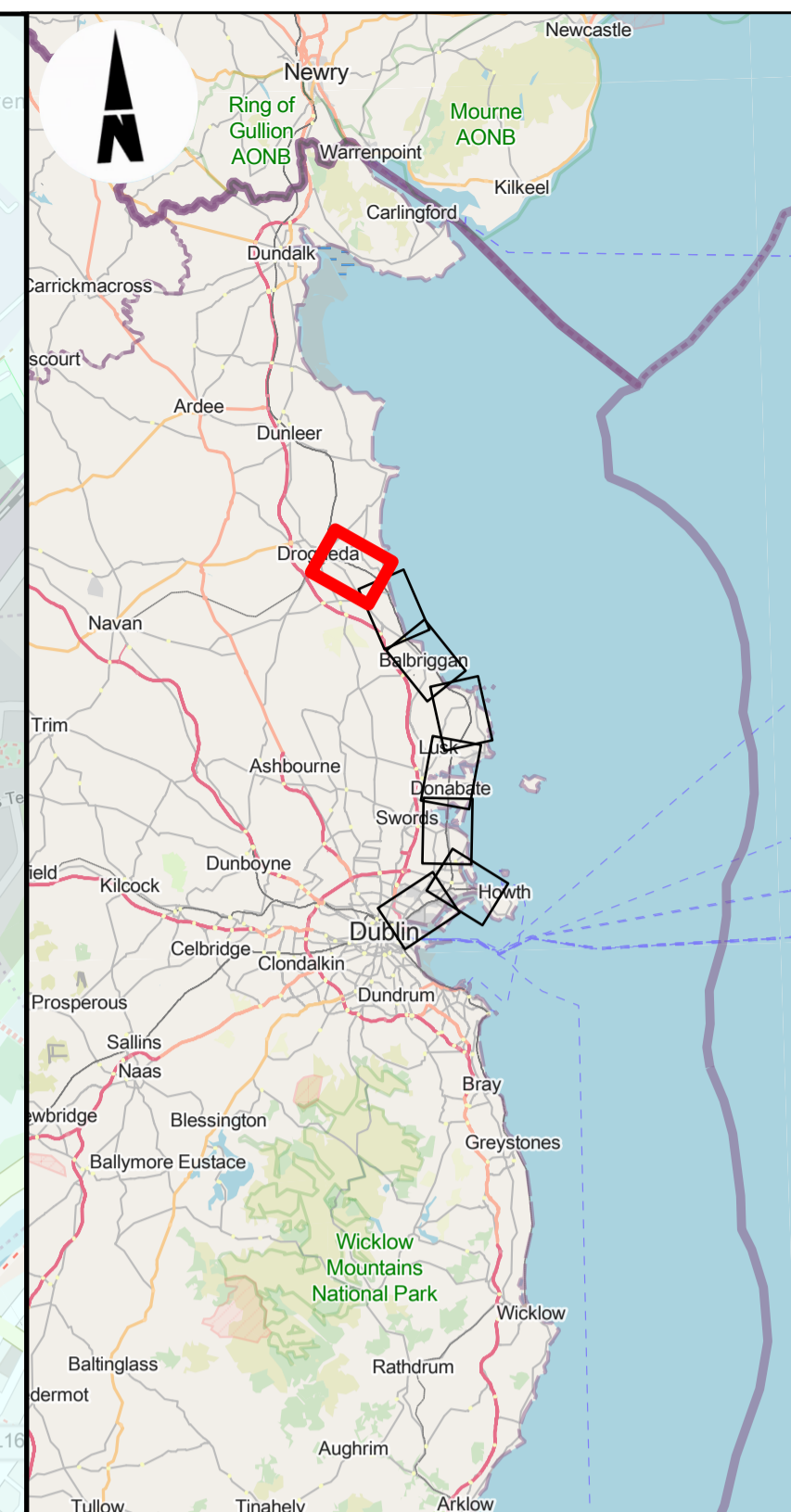
QMS Code: 279933-00

Project Title: **DART+ COASTAL NORTH**

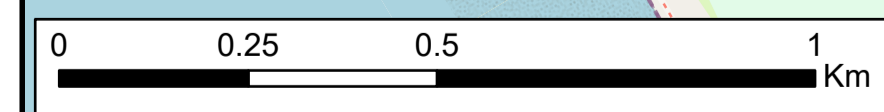
Drawing Title: **HYDROGEOLOGY**
FIGURE 11.2: HYDROSTRATIGRAPHIC ROCK UNITS

Drawing File Name: D+WP56-ARP-ZZ-NL-DR-EVGT-100078

Sheet Number: 8 of 9 Status: S4 Rev: P02



- LEGEND**
- RAILWAY STATIONS
 - DEVELOPMENT BOUNDARY
 - 100M BUFFER
- HYDROSTRATIGRAPHIC ROCK UNITS (GSI)**
- DINANTIAN PURE BEDDED LIMESTONES
 - DINANTIAN UPPER IMPURE LIMESTONES
 - GRANITES & OTHER IGNEOUS INTRUSIVE ROCKS
 - ORDOVICIAN VOLCANICS



NOTES

Disclaimer
© Irish Rail (2023). This drawing is confidential and the copyright in it is owned by Irish Rail. This drawing must not be either loaned, copied or otherwise reproduced in whole or in part or used for any purpose without the prior permission of Irish Rail.

© OpenStreetMap contributors.

© Contains Irish Public Sector Data (Geological Survey Ireland) licensed under a Creative Commons Attribution 4.0 International (CC BY 4.0) licence.

© Ordnance Survey Ireland and Government of Ireland. All O.S. data used for plans are printed under "Copyright Ordnance Survey Ireland 0039723 (OSI Aerial Data or OSI Lidar Data) & 2023/ OSI, NMA, 180 (OSI Vector Data)". All elevations are in metres and relate to OSI Geoid Model (OSGM02) Malin Head as defined by existing Project Control. All co-ordinates are in Irish Transverse Mercator Grid (ITM) as defined by OSI active GPS station Tallaght College (TLLG).



Rev	Date	Dn	Chkd	App'd	Description
P02	31/05/2024	DM	MF	GS	PLANNING ISSUE

Client: **larnród Éireann Irish Rail**

Engineering Designer: **ARUP**

Date: 07/09/2023 | Scale: 1:10000 @ A1 1:20000 @ A3

Project Code: D+WP56 | Originator Code: ARP

QMS Code: 279933-00

Drawn: DM | Checked: MF | Approved: GS

Project Title: **DART+ COASTAL NORTH**

Drawing Title: **HYDROGEOLOGY
FIGURE 11.2: HYDROSTRATIGRAPHIC ROCK UNITS**

Drawing File Name: D+WP56-ARP-ZZ-NL-DR-EVGT-100079

Sheet Number: 9 of 9 | Status: S4 | Rev: P02